

Link-UP

inside **this issue...**

...2nd round projects... Claims > Compliance, Completion and Processing and EU Economic Recovery Plan

issue 4



[First Minister, Alex Salmond at the official opening of the TMRC in Dundee in April 2009]

ANNOUNCEMENT OF 2ND ROUND PROJECTS

On 18 April 2009, First Minister, Alex Salmond MSP announced funding for projects in the Second Round of the Lowlands and Uplands Scotland ESF and ERDF Programmes for 2007-13. 129 successful projects were announced, with total funding of £70.2 million from ERDF and £24.7m from the ESF.

The projects all contribute to the European Commission's Growth and Jobs Strategy, and complement the Scottish Government's Economic Recovery Programme, focusing on supporting jobs and communities, strengthening education and skills and investing in innovation and industries of the future.

TRANSLATIONAL MEDICINE RESEARCH COLLABORATION / BUTANOL INNOVATION INTO BUSINESS / SCOTTISH ETHNIC MINORITY ENTERPRISE TRUST / MAKE THE MOVE ENABLE SCOTLAND / RESPONDING TO REDUNDANCY SKILLS DEVELOPMENT SCOTLAND / SCOTTISH GOVERNMENT TRAINING FOR WORK 2009/10 / SCOTTISH GOVERNMENT SUPPORT FOR REDUNDANT MODERN APPRENTICES

lists of all projects funded in the 2nd round can be downloaded from the ESEP website www.esep.co.uk



At the opening the First Minister Alex Salmond said >

'The presence of the TMRC in Scotland is a growing testament to Scotland's world-class reputation in medical and scientific research. This new research laboratory will be a valuable resource in its ongoing efforts to lead the way in translational medicine.'



> ERDF Priority 1

Translational Medicine Research Collaboration (TMRC)

Healthy ambitions for partnership in therapeutic medicine

The Translational Medicine Research Collaboration (TMRC) is a collaboration involving four of Scotland's leading universities (Aberdeen, Dundee, Edinburgh and Glasgow), their corresponding health boards, Scottish Enterprise and global pharmaceutical company Wyeth. The partnership aims to raise the commercial profile of Scotland's translational research in five main therapeutic areas: cardiovascular, women's health, neurology, oncology and inflammation.

What are biomarkers?

Translational medicine focuses on new tests, called biomarkers, for the diagnosis and monitoring of human diseases. Biomarkers enable molecular processes in the body to be monitored. They can indicate presence of disease or provide information to assist disease understanding, mechanisms of action and patient response for new targeted drug therapies.

Commercial focus, specific output

The ERDF funding will directly support 88 collaborative research projects across Scotland in the priority industry Life Sciences. Each project is entirely commercially focused and is designed to meet very specific outputs required of the pharmaceutical and diagnostics industries. TMRC has biomarker programmes in several key disease areas, including:

- Cardiovascular (heart) and metabolic (diabetes) diseases
- Oncology (various cancers)
- Neurosciences (schizophrenia, depression and Alzheimer's disease)
- Inflammation (including asthma and arthritis)
- Musculoskeletal (including osteoporosis)
- Areas of women's health.

The TMRC's new core research laboratory was officially opened by First Minister Alex Salmond on 21 April 2009.

Butanol Innovation Into Business Edinburgh Napier University

Roadmap to sustainable biofuel

The UK Road Transport Fuels Obligation requires that 5% of the UK's transport fuel comes from a renewable source by 2010, while the EU has decreed that biofuels should account for 10% of total fuel sales by 2020 and the Scottish Government aspires to 50% of Scotland's energy coming from renewable sources by 2050. The opportunity exists to develop a competitive sustainable UK biofuel industry.

Ideas in ferment

Butanol is now recognised as an extremely important second generation biofuel. A large percentage of businesses in Scotland utilise the industrial fermentation process and create biological waste streams – for example the Scotch whisky industry – and could benefit from the transfer and application of this process.

Low awareness, common confusion

However, awareness levels within Scottish industry of the potential application, and benefits of localised butanol production, is very low due to a lack of appropriate information, networks and business exemplars especially amongst SMEs. There is also confusion regarding the business and environmental benefits of biofuels in general.

The key activities will focus on working with SMEs to:

- Build awareness through the development and dissemination of tailored information and knowledge
- Create and promote new sustainable RTD and networks, particularly for local SMEs, that transfer key research and innovation knowledge
- Create collaborative research projects that address RTD bottleneck gaps in potential growth sectors: energy, food and drink, and chemicals and
- Pilot projects that test new approaches to encourage innovation within mainstreaming activity completing scoping studies and prototype development.

> ERDF Priority 2

Scottish Ethnic Minority Enterprise Trust Edinburgh Business Development (EBD)

Inclusion, initiative and integration

Edinburgh Business Development's Ethnic Minority Enterprise Trust project will address two areas – the lack of support to ethnic minorities in Edinburgh and the need to join up the various ethnic minority business support agencies across Scotland.

Broadening the appeal

EBD traditionally run programmes geared towards a target group of Asian men aged over 30, but have identified a need for assisting a wider group from ethnic minority backgrounds and under-represented groups to start up businesses, including Black Africans, new migrants, younger people (aged 18 to 25) and women.

Maximising potential, minimising obstacles

The project will empower people to overcome barriers and use their full potential, through self-employment training, networking, mentoring and advice and guidance sessions, and to assist them in becoming socially aware of their surroundings and their contribution to their community.

Activity will focus on:

- One to one advice to potential entrepreneurs
- One to many advice (through showcasing and networking events)
- Mentoring (using established business role models from participants' own communities) – new business leaders benefit from being able to speak to people with experience and expertise in a wide area
- Tapping into mainstream support, for example through Business Gateway, Prince's Scottish Youth Business Trust.



> ESF Priority 1

Make the Move – Enable Scotland

Helping learning disabled people into employment

ENABLE Scotland's "Make the Move" project supports individuals with learning disabilities to progress towards employment. The project seeks to leave a legacy of improved services by changing assumptions made by parents, carers and professionals that college courses and supported employment are an adequate 'end' point for people with learning disabilities or that people with learning disabilities cannot work.

The Project has developed a range of initiatives, including:

- Developing an innovative planning tool for young people leaving school/college which enables them to develop a realistic action plan for employment, helping prevent them from becoming economically excluded
- Engaging with young people who would not otherwise be able to access the Get Ready for Work Programme or other employability programmes. Individual barriers to participation are tackled allowing these young people to enter and complete the mainstream programme, and so reducing previous high rates of early leavers
- **Travel Buddies** trains people with learning disabilities to become employed as sessional travel buddies for peers who wish to develop independent travel skills. Several agencies and partners are already using this service to train job seekers
- **Promoting Employment Options** works with families and participants to promote employment as a realistic option. This is achieved by using innovative ways to identify and engage with people who are furthest removed from the world of work, addressing concerns and barriers to employment, and signposting to and linking with appropriate services
- **The Supported Living Initiative** is an intensive support model, designed to assist participants to explore employment options and change the culture within care services to ensure employability activity becomes part of the participant's long term support model
- **Financial Inclusion** provides tailored advice and information to participants and their families to maximise incomes, promoting the benefits of working. The objective of this stream is to remove the potential barrier of financial uncertainty from participants and to enable them to move into work. This underpins everything above, ensuring that participants do not lose out financially from moving into work.

> ESF Priority 2

Responding to redundancy Skills Development Scotland

Broader approach, more individual support

The current economic climate means that in Scotland we face a significant increase in the number of people experiencing redundancy. Although Skills Development Scotland (SDS) currently provides support through PACE Partnerships at a local level, most areas have no full time resource allocated to this activity.

This project aims to:

- Provide significantly more staff dedicated to providing support to those facing redundancy
- Intervene as early as possible in the process to try to ensure that where possible redundancies are avoided
- Offer a more consistent service across Scotland

Targeted resources

Resources will be directed at those geographic areas where SDS anticipates the largest proportion of redundancies. The project targets individuals who are still in employment but face redundancy. This group will include:

- Potential entrepreneurs
- Employees who lack basic core skills
- Employees without qualifications at SCQF levels 5 and 6
- Individuals wishing to enter sectors where their gender is under-represented

While the project does not focus on any specific industry sector, we anticipate that the Financial Services sector will feature heavily as will Construction and possibly Retail.

Working together

Skills Development Scotland will work with a variety of other agencies and organisations, including further education colleges, higher education, training providers, local authorities, Business Gateway, JobCentre Plus, Scottish Enterprise including SDI, Scottish Government, the third sector and the STUC.

Broad support

Project staff will provide support to individuals and groups in a variety of ways depending on the situation and the needs of the individual. This will include:

- One to one careers planning interviews
- Employability interviews
- Workshops
- Presentations
- On-line tools
- Helpline/contact centre

Opportunities identified individually

Access to training funded through Training for Work will be subject to an individual participating in an intensive interview with a Careers Adviser. During the interview a suitable training opportunity is identified which is likely to lead to a sustainable job.

Lists of all funded projects can be downloaded from the ESEP website
www.esep.co.uk



two

STRATEGIC PROJECTS APPROVED

The Programme Monitoring Committee on 27 May 2009 approved two ESF strategic projects submitted under the Exceptional Project Procedure. This Procedure was approved by the PMC in November 2008 in recognition that there may be special circumstances which prevent an application being submitted within the usual application deadlines, for example in response to economic turmoil, or large scale redundancy.



The projects approved:

1 > Scottish Government Training for Work 2009/10

Support increased, eligibility broadened

This project received an ESF grant of £2,793,706 to increase the support available through Training for Work (TfW) in response to the anticipated increase in people becoming unemployed over the coming months. It will target around 3,000 individuals resident in eligible Priority 1 areas who are aged 18 or over and have been unemployed for at least three months.

Changes to eligibility rules for TfW also mean that early entry to the programme (from the first day of unemployment) is available for specific vulnerable groups such as redundant workers, disabled people, and lone parents. The project aims to provide training and advice to enable individuals to secure employment or be ready to take up a job opportunity.

2 > Scottish Government Support for redundant Modern Apprentices

An ESF grant of £652,260 was made to this project, to support 500 Modern Apprentices (MAs) who are being made redundant by their employers as a result of the current economic downturn.

The project offers two main routes of support:

- i) a service that seeks to secure an apprenticeship with an alternative employer
- ii) where it is not possible to find an alternative employer, provision of alternative training, for example finding the MA another means of continuing their training, or provision of other training options tailored to the MA's individual needs.





CLAIMS, COMPLIANCE, COMPLETION AND PROCESSING

Many project sponsors will have had direct experience of the difficult audit environment which came to be a prominent feature of the later years of the 2000-2006 Programmes. The additional demands placed not only on project sponsors but also on Scottish Government and Programme Management Executive staff were substantial and continue even now. If we learned anything from that experience it was that previous compliance arrangements, in particular concerning the various checks undertaken by way of verifying the actuality and eligibility of expenditure, were not sufficiently robust to offer a high enough level of assurance to the Commission and as a result compliance areas such as procurement, state aids and revenue generation were all too frequently appearing in Commission audit reports as identified irregularities leading to decommitment. This experience was not unique to Scotland and many other member states were similarly called to account by the Commission audit services, who increasingly opt to extrapolate errors found during visits across the value of the Programme concerned and applying potentially punitive penalties on the Scottish Government as Managing Authority.

Accordingly, the Scottish Government in responding to these challenges determined to put in place for the new programming period a system which was both robust and proportionate, protected applicants, and which would offer audit authorities at the Scottish and EU level the degree of assurance required.

That's all good and well but how can we speed up the processing of claims in support of key investments in the economy, achieve spend levels consistent with the N+2 targets, and at the same time ensure that we are

respecting the audit requirements applying to all Structural Fund Programmes? At a rudimentary level, ESEP must check all submitted progress reports and claims, including the supporting transaction lists. In addition, we are required to carry out an additional check of 20% of the value of eligible expenditure across cost headings in each claim. We are therefore obliged to request source documents from project sponsors in verifying the 20% sample. This inevitably institutes a delay in processing but we are aiming to issue the sample request within two working days of receipt of an approved PRC and transaction list. The Managing Authority will accept the first claim however, it is important to understand that subsequent claims can not be processed if requested documentation is not provided and/or expenditure cannot be verified.

We all have a responsibility to ensure that limited funds are used to achieve maximum impact, are in line with the approved purpose, and fundamentally are in full compliance with all national and EU regulatory requirements. In the current economic climate we can ill afford the situation in past Programmes where millions of Euros were decommitted and recovered by the Commission. Hence the delivery of a system that builds on the oft repeated phrase "compliance up-front".

As with any new system, this takes time to bed in and for everyone to become familiar with the new and more rigorous level of checks. In addition, we are all having to come to terms with the unforeseen additional demands on our available and often limited resources.

A stark illustration of the time commitments involved is provided by the following statistic;

to date 519 PRCs have been submitted and processed representing 154 approved projects.

The average number of versions of PRCs submitted per approved project is 3.5.

In effect it is taking project sponsors at least three attempts before a final and approved PRC is submitted to Scottish Government for payment.

This of course also highlights the perception, if not the fact that project sponsors are having difficulties in providing accurate, complete and acceptable PRCs and transaction lists, and the follow-up 20% sample check source documents are either incorrect or not provided.

At ESEP we are deploying additional resources and have recruited two additional Development Officers and are sub-contracting additional support services at the Programme Manager and Development Officer level in this regard.

ESEP has undertaken an analysis of common errors and areas of confusion on the part of project sponsors in completing PRCs and transaction lists. They include for example;

1 > Lack of clarity on Transaction Lists

For example, items simply listed as consumables or training materials raises questions on what these items are and necessitates follow-up by ESEP. It would be helpful if applicants could provide more explanation.

2 > Defrayal Dates on Transaction Lists

This is either not provided or in the wrong PRC period.

3 > Salary Calculations on Transaction Lists

This largely refers to the hourly rate calculation and is often either unclear or incorrect. Further guidance can be provided by contacting the IAB.

4 > Certifying Officer (PRCs)

The certification page of the claim needs the signatory selected from a drop down list on €UROSYS. In many cases, the person who actually signs the form is different from the person selected from the drop down menu, or the person selected is not a designated signatory for that project. This results in the PRC being rejected.

5 > Participant Characteristics (PRCs)

This section causes most errors as the applicants are unsure on how to complete. Further guidance is available in the Notes for Applicants which can be downloaded from the ESEP website.

6 > Indicators and Targets (PRCs)

There is general confusion on how to complete this section. Further guidance is available in Annex A of the Notes for Applicants which can be downloaded from the ESEP website.

Guidance is available on the completion of the online €UROSYS claim form at <http://www.esep.co.uk/04-claims.html>, while guidance on a model transaction list will be available shortly on the ESEP website www.esep.co.uk.

Notwithstanding the guidance available, and the provision of claims seminars, we are working to reduce the error rate and are attempting to visit as many project sponsors as possible in order to provide hands-on assistance and check on-site personal data where this forms a significant component of the claim.

We will do all we can to speed up the process and we are already seeing an improvement in processing times. However, in the final analysis responsibility must rest with project sponsors ensuring that they make every effort to complete claims and transaction lists fully and accurately, and respond timeously to any requests for clarification.

update

UPDATE TO SCOTTISH GOVERNMENT ECONOMIC RECOVERY PROGRAMME

LOOKING BEYOND RECOVERY

The Scottish Government's Economic Strategy set out five strategic priorities that drive economic growth: infrastructure and place; learning, skills and well-being; a supportive business environment; effective government; and equity. The Scottish Government's Economic Recovery Programme was published in January 2009 as part of the *Scottish Government's Response to the First Annual Report of the Council of Economic Advisers*.

Key elements of the Economic Recovery Programme:

- [Reshaping capital spending plans](#)
- [Ensuring all government activity, including on planning and regulation, supports economic development](#)
- [Intensifying activity and support for tourism and Homecoming 2009](#)
- [Intensifying work around energy efficiency and fuel poverty](#)
- [Increasing advice to businesses and individuals](#)
- [Improving financial advice to vulnerable individuals](#)

Three-way focus

The Recovery Programme was updated in June 2009 and the current update sets out how the priorities identified in the Scottish Government's Economic Strategy will drive growth by focusing on three key areas:

- [Supporting jobs and our communities](#)
- [Strengthening education and skills](#)
- [Investing in innovation and the industries of the future](#)

In ensuring that Scotland is well placed to take advantage of recovery when it comes, Scottish Government decided to bring forward spend in the Scottish Structural Fund Programmes. The intention is to support projects which reflect the counter-recessionary policy priorities identified in their Economic Recovery Programme and assist people back into employment.

Projects funded by the LUPS Programmes are assisting recovery through investment in a wide range of areas identified as key priorities in the Recovery Programme. Examples include investment in:

- **The renewable energy sector** > projects include The Hydrogen Office based at Fife Energy Park
- **Industries identified as emerging drivers of future economic growth** > such as life sciences, food and drink and creative industries. Projects include the Edinburgh Science Triangle and the Nexxus Scotland Bioscience Network
- **Research and innovation collaboration** > supporting collaboration between businesses and suppliers of R&D and innovation such as University of Glasgow's SIGMA project
- **Business growth** > interventions aimed at innovative, high-growth potential businesses. Projects supported include the Scottish Co-investment Fund and Scottish Angel Capital Programme
- **Education and skills** > reinforcing the aims in Skills for Scotland by providing education and training through a range of ESF funded projects tailored to individuals' needs, and stimulating and meeting real demand from employers. Projects include the Workers' Education Association's Job Rotation project in Ayrshire supporting companies to develop their staff by providing additional workers to release their current employees for training and development.
- **Support for people facing redundancy** > through the Partnership Action for Continuing Employment (PACE) initiative and Support for Redundant Modern Apprentices funded through Priority 2 ESF
- **Tourism** > through the Homecoming 2009 initiative aimed at helping employment in the tourism industry.

EUROPEAN ECONOMIC RECOVERY PLAN FOR GROWTH AND JOBS

EXCEPTIONAL TIMES, EXTRA AID

In December 2008, the European Council adopted the European Economic Recovery Plan to co-ordinate measures to stimulate the European economy in response to the current global economic crisis. The Council believe that these measures will have the effect of not only boosting the economy in the short term, but also addressing issues for the longer term.

The Recovery Plan includes measures from the Member States equivalent to 1.2% of the EU's GDP (€170 billion), equivalent to 85% of the total, and expenditure from EU sources in the region of 0.3% of the EU's GDP (€31 billion). EU sources will be made up of €5 billion investment in energy and internet infrastructure, €11 billion additional advance payments under Cohesion Policy and increased European Investment Bank (EIB) credit facilities for SMEs of €15 billion.

On 12 May, the European Commission published country factsheets which provide an overview of some of the key achievements of Cohesion Policy, and outlining Member States' main priorities for investment for 2007-13. The UK identifies their main priorities as investment in R&D, environmental protection, support for entrepreneurship and SMEs and help for workers and companies to adapt to market conditions and raise skills levels.

Temporary framework for State Aid

The European Commission has adopted a temporary framework for State Aid to help Member States address the exceptional difficulties faced by companies in obtaining finance in the current financial and economic situation. In particular, the framework enables Member States to grant the following types of aid, under certain conditions, until the end of 2010:

- Up to €500,000 per company over the next two years
- State guarantees for loans at a reduced premium
- Subsidised loans, in particular for the production of green products (meeting environmental protection standards early or going beyond such standards)
- Risk capital aid up to €2.5 million per SME per year (instead of the current €1.5 million) in cases where at least 30% (instead of the current 50%) of the investment cost comes from private investors.



Online information >

Any measures introduced under the framework must be in the form of a scheme, and be notified to the European Commission who have committed to ensuring swift authorisation. More information can be found on the Scottish Government's State Aid Unit website www.stateaidscotland.gov.uk

Two new measures under the temporary framework

- UK National Temporary Loan Guarantees Framework – aid in the form of loan guarantees as allowed under the Framework
- Temporary Aid for the Production of Green Products – aid in the form of subsidised interest rates for investment in environmental products.



JESSICA

: new name

in urban development

JESSICA > the Joint European Support for Sustainable Investment in City Areas - is an exciting new initiative developed by the European Commission and the European Investment Bank in collaboration with the Council of Europe Development Bank.

JESSICA gives EU Member States the option of using some of their Structural Funds to make repayable investments in projects that form part of an integrated plan for sustainable urban development. JESSICA will allow ERDF to be used in the form of repayable loans, guarantees or equity for ERDF-eligible components of urban regeneration schemes in eligible areas across the LUPS Programme area.

Creating a legacy

Investment proposals must be capable of generating a financial return. Once returned, funds could be reinvested in any regeneration activity, e.g. housing or transport – not just ERDF eligible activities. This could leave a lasting legacy to fund urban regeneration projects within the Programme area beyond 2013.

Scottish Government has established a Steering Group comprising membership from COSLA and Scottish Enterprise to direct the implementation of JESSICA in Scotland with one of the first actions being to commission a feasibility study.

Broader, more energetic scope

The scope of eligible activities for ERDF Priority 3 will be widened with regard to activity funded through JESSICA, to include energy efficiency and renewable energy measures for the housing sector.

Match-funding rules relaxed

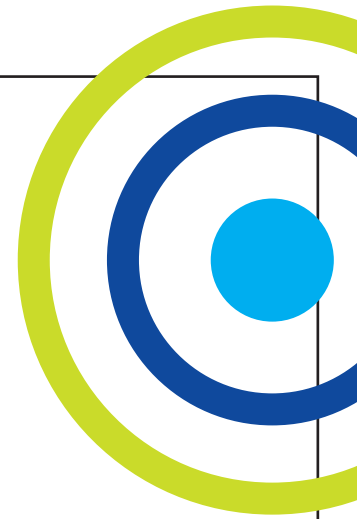
Importantly, JESSICA rules have been relaxed regarding match-funding to allow in-kind contributions (e.g. land assets) to be used as eligible co-financing.

What happens next?

At its meeting on 27 May 2009, the LUPS PMC agreed that the Managing Authority should produce detailed proposals to deliver JESSICA in Scotland based on a Holding Fund model, and that they work with the EIB to sign a Memorandum of Understanding as Holding Fund Manager. An initial commitment of £25m ERDF has been agreed by the PMC into the capitalisation of the Holding Fund.

3rd application round

TIMETABLE



Process

Closing date for submission of First Stage Application forms

Call for Second Stage Application Forms for successful First Stage Application projects

Closing date for submission of Second Stage Applications

Programme Monitoring Committee Meeting to consider progress and where appropriate provide supplementary guidance to Advisory Groups

Technical and eligibility checks completed by IAB and applicants notified

Submission of revised Second Stage Application Forms by applicants

Applications to Advisory Groups for scoring

Standing Advisory Group Meetings

Programme Monitoring Committee Meeting to agree recommendations of Advisory Groups

Ministerial announcement of approved projects

Target Date

14 August 2009

11 September 2009

9 October 2009

28 October 2009

6 November 2009

20 November 2009

4 December 2009

1-12 February 2010

24 March 2010

To be agreed



GOT A QUESTION/ GET IN TOUCH

If you would like further information on the 2007-13 Lowlands and Uplands Scotland Programme, please contact a member of **ESEP in Glasgow**
0141 241 6150 or Inverkeithing
01383 413151



Name	Role	email	Direct Dial No.	Office
Gordon McLaren	Chief Executive	gmclaren@esep.co.uk	01383 420695	Inverkeithing
Nigel Thomas	Depute Chief Executive	nthomas@esep.co.uk	01383 420690	Inverkeithing
Susan Napier	PA to Chief Executive	snapier@esep.co.uk	01383 420695	Inverkeithing
Karen Crooks	Finance Manager	kcrooks@esep.co.uk	01383 420692	Inverkeithing
Muriel Mackenzie	Research and Policy Officer	mmackenzie@esep.co.uk	01383 420696	Inverkeithing
Susan Tamburrini	Head of Programme Management	stamburrini@esep.co.uk	0141 241 6158	Glasgow
Rob Gompertz	Programme Manager	rgompertz@esep.co.uk	01383 420694	Inverkeithing
Billy Love	Programme Manager	blove@esep.co.uk	0141 241 6156	Glasgow
Lynda Peacock-Smith	Programme Manager	lpeacock@esep.co.uk	0141 241 6157	Glasgow
Tracey Gillon	Development Manager	tgillon@esep.co.uk	01383 420698	Inverkeithing
Alison Cumming	Development Officer	acumming@esep.co.uk	01383 420680	Inverkeithing
Christopher Martin	Development Officer	cmartin@esep.co.uk	01383 420697	Inverkeithing
Carrie Wilson	Development Officer	cwilson@esep.co.uk	01383 413141	Inverkeithing
Jamie Findlay	Development Officer	jfindlay@esep.co.uk	0141 241 6166	Glasgow
Izabela Klimorowska-Garb	Development Officer	iklimorowska@esep.co.uk	0141 241 6151	Glasgow
Kenneth Robertson	Development Officer	krobertson@esep.co.uk	0141 241 6153	Glasgow
Eilidh Steele	Development Officer	esteele@esep.co.uk	0141 241 6155	Glasgow
Lynn Murray	Senior Administration Assistant	lmurray@esep.co.uk	01383 413141	Inverkeithing
Peter Carlyle	Senior Administration Assistant	p Carlyle@esep.co.uk	0141 241 6164	Glasgow
Damian Klepacki	Administration Assistant	dklepacki@esep.co.uk	01383 413141	Inverkeithing
Lisa Weir	Administration Assistant	lweir@esep.co.uk	01383 413141	Inverkeithing
Mark Murphy	Administration Assistant	mmurphy@esep.co.uk	0141 241 6150	Glasgow
Kathleen Tominey	Administration Assistant	ktominey@esep.co.uk	0141 241 6168	Glasgow

For information on the Highlands and Islands Programmes, please contact HIPP on **01463 279500** or visit **their website at**
www.hipp.org.uk

Images: P.4/top P.5 courtesy of West Fife Enterprise.